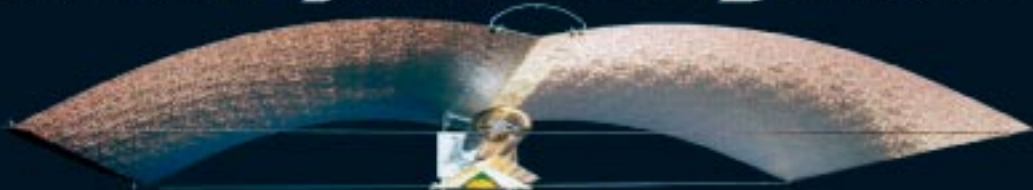


HI



Engineering Excellence Since 1985  
(Patent)

Patented / Patents Pending

# Adjust-A-Wings®

## “ INSTRUCTIONS ”

**ADJUST-A-WINGS®** REFLECTORS ARE SCIENTIFICALLY DESIGNED FOR THE ADVANCED GROWER. DEVELOPED OVER MANY YEARS BY EXPERTS IN THE INDOOR HORTICULTURAL INDUSTRY.  
**ADJUST-A-WINGS®** REFLECTORS COME IN 2 UNIQUE FINISHES, “**AVENGER**” 97 % REFLECTIVE GLASS COATED SUPER ALLOY. “**DEFENDER**” TITANIUM WHITE HEAT RESISTANT POWDER COATED ALUMINIUM.

### STEP 1 Hydroparadise

REMOVE CONTENTS AND CHECK AGAINST THE LIST BELOW.

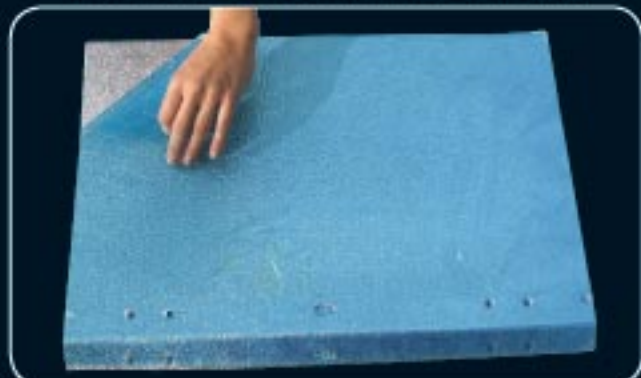
- 2 X REFLECTOR WINGS
- 2 X ADJUSTMENT WIRES
- 2 X HANGING HOOKS & THUMB SCREWS
- 1 X LAMPHOLDER



NOTE: LAMP HOLDERS ARE PACKED AND SOLD SEPARATELY..  
2 LAMP HOLDERS CAN BE USED WITH LARGE  
ADJUST-A-WINGS REFLECTORS

### STEP 2 Hydroparadise

REMOVE THE PLASTIC COATING FROM BOTH WINGS.



### STEP 3 Hydroparadise

CONNECT BOTH WING SHEETS TOGETHER BY ALIGNING  
BUTTON RIVETS WITH KEYHOLE SLOTS AND THE  
WINGS WILL SIMPLY LOCK TOGETHER.

NOTE: DO NOT ATTACH ADJUSTMENT WIRES  
BEFORE PROCEEDING TO STEP 4.\*



### STEP 4 Hydroparadise

ATTACH THE HANGING HOOKS TO BOTH ENDS OF THE  
ADJUST-A-WINGS USING THE THUMB SCREWS PROVIDED.



### STEP 5 Hydroparadise

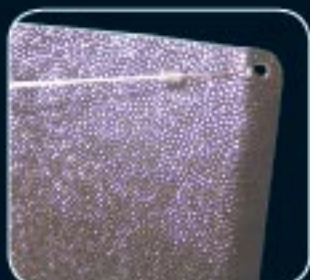
SELECT ONE ADJUSTMENT WIRE, TAKE THE END WITH THE SINGLE STOPPER AND THREAD IT THROUGH THE FIRST ADJUSTMENT KEYHOLE. THEN THREAD IT BACK THROUGH ONE OF THE OTHER ADJUSTMENT KEYHOLES, AS SHOWN BELOW.

**THIS PRESETS YOUR REFLECTORS WIDTH.**

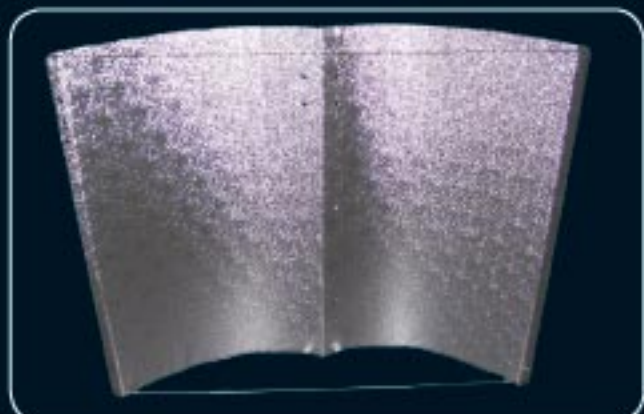


### STEP 6 Hydroparadise

WHILE HOLDING THE OPPOSITE END OF THE ADJUSTMENT WIRE (THAT HAS 2 STOPPERS) CAREFULLY BEND THE WINGS BACK AWAY FROM THEIR SPINE AND LOCK THE END STOPPER INTO THE SINGLE KEYHOLE PROVIDED. REPEAT STEPS 5 & 6 AT THE OPPOSITE END OF THE WINGS TO ATTACH THE 2ND ADJUSTMENT WIRE.



**NOTE: THE 2ND STOPPER ON EACH ADJUSTMENT WIRE IS FOR GRIP ONLY IN THESE PROCEDURES**



**YOUR ADJUST-A-WINGS NOW LOOK LIKE THIS.**

### STEP 7 Hydroparadise

**ADJUST-A-WINGS** SETTINGS ARE CHANGED BY REVERSING STEP 6 AND CHOOSING A DIFFERENT KEYHOLE POSITION FROM STEP 5.

**NOTE: ADJUST ONE END OF THE WINGS AT A TIME.**

**WARNING:**

**FOR SAFE OPERATION, ENSURE THAT THE POWER IS OFF BEFORE ADJUSTING THE WINGS OR LAMPHOLDER.**

### STEP 8 Hydroparadise

TAKE THE LAMPHOLDER AND THE 2 THUMB SCREWS PROVIDED AND ATTACH AS SHOWN BELOW.



**WIDE SETTINGS PRODUCE BROAD EVEN LIGHT PATTERNS FOR MAXIMUM AREA COVERAGE AND DEEP FOLIAGE PENETRATION. NARROW SETTINGS PRODUCE UNIFORM CONCENTRATED LIGHT PATTERNS FOR USE AT GREATER DISTANCES ABOVE PLANTS. VERTICAL ADJUSTMENTS TO THE LAMPHOLDER PROVIDE A METHOD FOR FINE FOCUS CORRECTION.**

 **Adjust-A-Wings® Super-Spreader®** 

**INCREASE YIELD! REDUCE HEAT! SAVE POWER!**